

SEND SYSTEM LEADERS & LPCV MONTHLY MEETINGS

About LPCV

We collect the independent voice of local families in the Borough of Luton. We aim to play a lead role in shaping how services are designed, delivered and promoted. We will work with those that provide education, health and social care services to give feedback from local families. We will do this by providing lots of opportunities for families to have their voices heard and views shared.

We welcome families of children with Special Educational Needs and/or Disabilities (SEND 0-25). The forum is open to parent carers, family members, guardians and foster parents of children and young people who have Special Educational Needs and/or Disabilities (no diagnosis needed). If you live in the Borough of Luton or access services from education, health or social care in Luton we would love you to join us. We feel passionately that you should have a voice.

Luton Parent Carer Voice would like to invite you to its monthly meetings with leaders from different departments within SEND SYSTEM.

This would give parents and carers the opportunity to meet and share views with Social Care, Education & Health Care representatives.

The sessions are scheduled as follow:

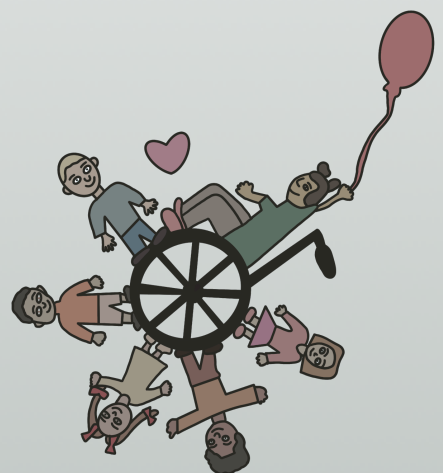
- **Social Care Session** on the 10th of November at 13:00-14:15
- **Education Session** on the 6th of December at 10:00-11:15
- **Full Group Session** on the 27th of January 2022 at 13:00-14:15
- **Health Session** on the 24th of February 2022 at 10:00- 11:30

All the above sessions will be held at:

Future House
The Moakes
Luton
LU3 3QB

To register, please follow this link and choose your session

www.lutonparentcarervoice.eventbrite.co.uk



Contact Us

Email: admin@lpcv.org

